

SNIPPETS

SUPPLEMENT
TO NEWSLETTER
No. 7.

Please spread our news!

In April, member and former Publicity Officer Bob Dobson wrote as follows:

In the last week, I have received your emailed circulation about the 'At Home' at Tatham from the Hyndburn Local History Society and the Wyre Archaeology Group. I am a member of other societies, but haven't received it from THEM.

It might be worth putting an item in the next Newsletter specially asking Society Secretaries to FORWARD LLHF ITEMS to their members.

LIVERPOOL HISTORY SOCIETY

JUN. 8 (1.30pm) - Annual General Meeting followed by talk on the theme:
'The achievements of Jesse Hartley' David Hearn

JULY/ AUGUST No meetings - Summer break

SEP. 21 Visit to St. George's Church, Everton, followed by a talk about the building by Ken Rogers.

OCT. 26 Joint 'Study day' with the Historic Society of Lancashire & Cheshire at Liverpool Hope Campus, Shaw Street, on the theme: 'How important was social welfare to the success of the merchant community in Victorian Liverpool?'. Details to be confirmed.

NOV. 16 'The growth of freemasonry in 19th century Liverpool' by Dr David Harrison.

DEC. 14 'The Deane Road Jewish Community' by Saul Mark

LANCASHIRE ARCHAEOLOGICAL SOCIETY – Summer Programme

Sat 7 Jun – Shap visit. A full day's visit around the village of Shap (Cumbria), organised for us by the local historical society. We meet at the Heritage Centre at 10.15am for coffee, then take a 1.5m walk to see some of the prehistoric monuments for which the area is famous. In the afternoon we go by car to Shap Abbey, then a short walk to Keld Chantry Chapel. Donation of £3 per person to the local society.

Getting to Shap from Preston, via M6, takes about one hour. Car sharing can be arranged. There are several cafés in Shap village, or you may prefer to take a picnic lunch (eat at Shap Abbey). Sensible shoes and outdoor clothes recommended! Please let us know if you plan to come (numbers will be limited to 20), and whether or not you need car-share.

Fri 4 July – Annual LAS Dinner – 7.30 for 8pm, at Amelies, 311 Preston Road, Coppull Moor, on the A 49 (sat nav PR7 5DU). Choice of food on the night – menu around £15 (plus drinks). Please let us know if you intend to come.

Sun 7 Sept – Walk to site of Cuerdale Hoard find, led by David Hunt. Meet at 2pm. More details later, but note it for your diaries now!

MESSAGE FROM MIDDLETON HERITAGE AND CONSERVATION GROUP



Middleton Parish Church will be open for visitors

*Each Friday afternoon (1pm to 4pm) *from April 25th to the end of September.

*A magnificent Grade 1 Listed medieval church. *Come and have a look!

Pendle Forest History Group www.pendleforesthistorygroup.co.uk

Saturday 7th June. An Exhibition of Wartime Memorabilia is being held by the group at Barley Village Hall with documents and artefacts from WW1 and WW11, many of which are on display for the first time. The Lancashire Record Office outreach team will be on hand during the afternoon to give advice on research and are bringing items from the archive to add to the display. The event will be open to the public from 11.00 am to 4.00 pm and entry is free.

Barley Village Hall is located at Cross Lane, Barley, near Burnley, BB12 9JU and is our regular monthly meeting venue. We welcome visitors and new members to any of our meetings full details of which are on our website.

=====

We have some excellent speakers organised for the following dates:

Wednesday 16th July: Roger Frost on the "Industrial Revolution in Burnley".

Starting at 7.30 pm. £2.00 for visitors, refreshments included.

Wednesday 15th October: Stanley Walmsley on "Ringing through the changes" – a talk on hand bell ringing with demonstrations.

Starting at 7.30 pm. £2.00 for visitors, refreshments included, earplugs not supplied!

Wednesday 19th November: Brian Jeffrey on "The Corn Mills of Whalley".

Starting at 7.30 pm. £2.00 for visitors, refreshments included.

=====

THE RAMPSIDE HOARD

Dot Boughton, Finds Liaison Officer, has sent me a report (*North West Evening Mail*, May 13th, 2014) concerning the exciting Bronze Age find made near Barrow in Furness in December of 2013. John Hocknell, a metal detectorist of Walney, recovered in a field in Rampside an assortment of Bronze Age weapons and tools (remains of axes, knives and gauges). On May 12th, 2014, an inquest at Barrow Town Hall ruled that the find should be classed as treasure; it has been named The Rampside Hoard. It is now in the care of the British Museum and will eventually be transferred to Barrow's excellent museum, **The Dock Museum**, in North Road. A BM expert told Mr. Hocknell that, while the hoard was relatively common in the UK, **no other similar finds had been made in the Furness area.** **The Portable Antiquities Scheme** has examined the findings and classed the axe head as a cast copper alloy palstave dating from the Middle Bronze Age, i.e. c.1400-1300BC. It is classed as a single find, but the hoard was discovered a short distance away and was classified as Late-Middle Bronze Age. Some of the items still have traces of wood and experts want to find out what kind of timber was used. M.E.



I am typing these two supplementary pages to the recent Newsletter on May 19th, 2014; the website of the CWAAS (cumbriapast.com) is displaying on Home Page a photograph of the Three Shires Stone at the top of Wrynose Pass. Home Page selects in rota items from the Early Days page of the website; this photo accompanies a report from the Proceedings recording the 1889 CWAAS excursion to Wrynose and mentioning 'the customary contortions needed to stoop in and touch' all three counties at once. So there we are! A tale of yore in stone! Cumberland, Westmorland and Lancashire over Sands no longer exist in name but form post-1974 Cumbria. **However, LLHF covers pre-1974 Lancashire.** Margaret Edwards.



Book signing

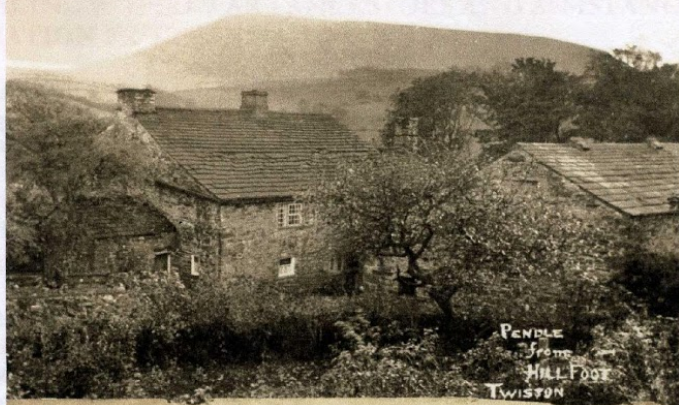
Pendle Heritage Centre,

Barrowford, Sunday 15th June, 11.30-3.00 p.m.

Jenny Palmer will be signing copies of her new book, available for £5.99 + postage, from

jenniferpalmer7@btinternet.com

Whipps, Watsons and Bulcocks *A PENDLE FAMILY HISTORY* 1560-1960



Jenny Palmer

LCC Community Heritage Team

These items have been selected from the Team's most recent report to let our readers and their Societies know something of the services available to them. **ARE YOU MAKING THE MOST OF WHAT LANCASHIRE HAS TO OFFER? M.E.**

TALKS ON LOCAL HISTORY TOPICS: Criminal Activity in the Ribble Valley

MARCH 3rd, 2014

This well-illustrated talk was presented to Longridge Library users by Community Heritage Manager, Fiona McIntyre. The stories, all taken from real life, gave the audience a taste of the crime that went on in the area during Victorian Times and included offences such as trouser stealing, abduction and even murder. The talk also highlighted the range of records available for anyone to research family and local history in Lancashire Libraries and the Lancashire Archives, and included information from books, photographs, census and criminal records available from Ancestry Institution and local newspaper accounts, available online and in microfilm copies in the main libraries.

FAMILY HISTORY DAYS: Portrait of the Past at Gawthorpe Hall, Burnley

APRIL 4th, 2014

In the Heritage Lottery funded project, "*Portraits from the Past*", artists from Mid-Pennine Arts have been looking at Gawthorpe Hall Museum through local people's recollections, photographs and creative arts. This event included exploring the history of the hall's residents and also helped people to find out about their own ancestors. Guidance and tuition can be given about what resources are available to aid family history researchers, and how to use computers to access those resources. (An event at Padiham Library used the residents of Gawthorpe Hall as guides to these digital resources.) If you would like more information about the *Portraits from the Past* project visit the Mid-Pennine Arts website at <http://midpenninearts.org.uk/pop>.

HELP IN TRACING WORLD WAR 1 ANCESTORS AND ASSISTANCE WITH COMMEMORATION PROJECTS:

APRIL 15th, 2014

The team is available to support local groups in carrying out their own research for their commemoration projects. On April 15th, Fiona McIntyre delivered a talk to Earby and District Local History Society on 'Tracing your WW1 ancestor/s using Cultural Service resources'. The Society has recently been successful in its application for lottery funding for its WW1 project and arranged for a digital learning session to take place at Earby Library on the 17th May, where Fiona demonstrated online resources available for finding out about WW1 ancestors.

FAMILY HISTORY WORKSHOPS

MAY 14th, 2014

Team member Claire Sutton spent a day at Halton Library helping individuals with their family history in a 'Surgery Session'. The surgery was advertised in the *Halton Prattle* and Claire was fully booked throughout the day. Enquiries were many and varied, coming not only from people just starting out on their researches but also from experienced family historians who had reached a sticking point. Halton's branch manager, Gina Prill, was extremely pleased with the interest that was generated and would like to repeat the event in the future.

Lancashire Archives

In 12 months time Lancashire Archives will be celebrating its 75th anniversary. Planned events and activities include an exhibition of 75 treasures. These will display the exciting diversity of Lancashire's archive collections over 900 years; topics/locations cover the length and breadth of the county. **You are invited to nominate your favourite document, or an item which you think should be included in the exhibition.** Lancashire Archives, Lancashire Record Office, Bow Lane, Preston PR1 2RE.